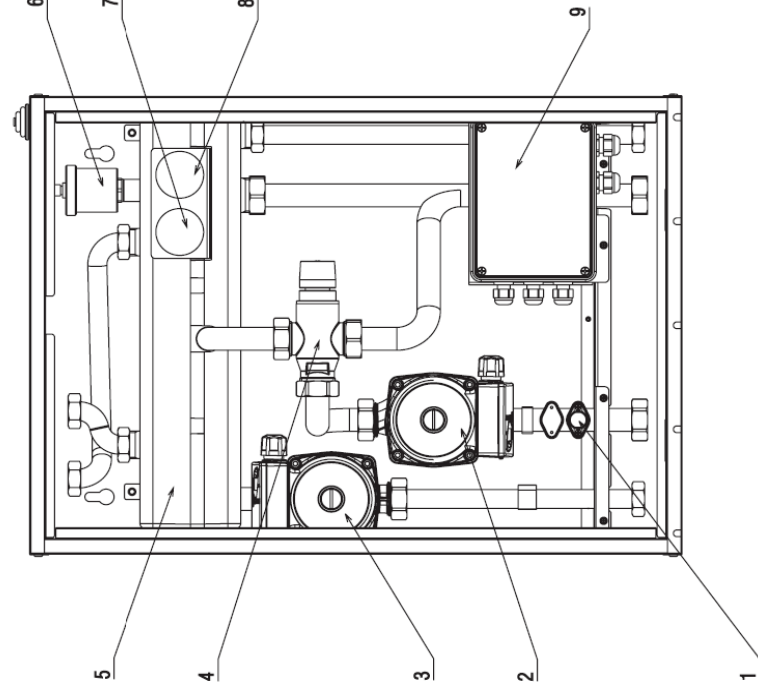
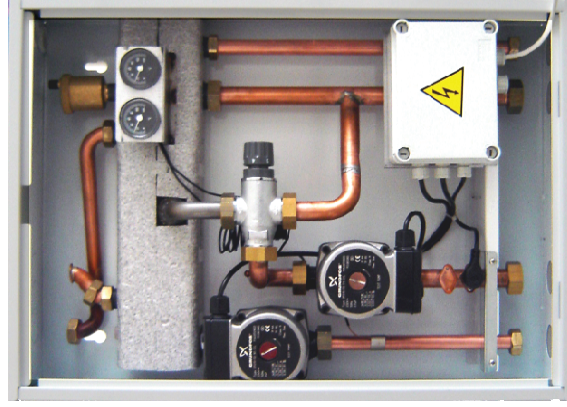


CONNECT BASE MIX 1

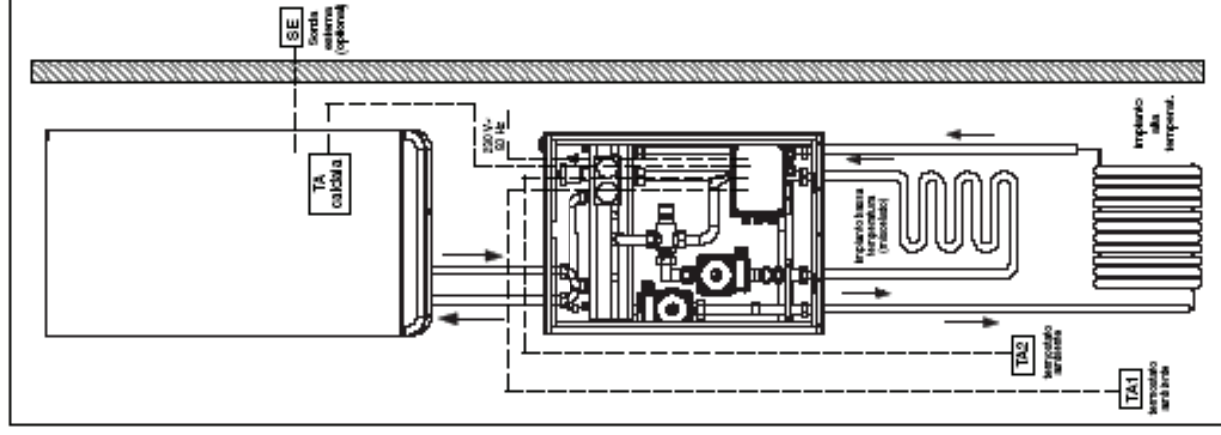


Connect Base is dedicated to be used in case of heating installation with two different kind of circuits:

- ✓ - high temperature (radiators)
- ✓ - low temperature (floor heating installation)



- 1 Low temperature limit thermostat (automatic reset)
- 2 Low temperature circulator
- 3 High temperature circulator
- 4 Mixing valve
- 5 Mixing bottle
- 6 Air discharge valve
- 7 High temperature circuit thermometer
- 8 Electrical connection box
- 9 Low temperature circuit thermometer

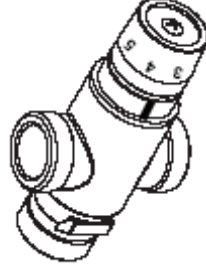


HIGH TEMPERATURE CIRCUIT

The temperature is set on the boiler

LOW TEMPERATURE CIRCUIT

The temperature depends on the manual setting of the mixing valve in the Connect



POS	MIN	1	2	3	4	5	MAX
T (°C)	20	22	25	35	45	55	60

Ref.: 80°C incoming